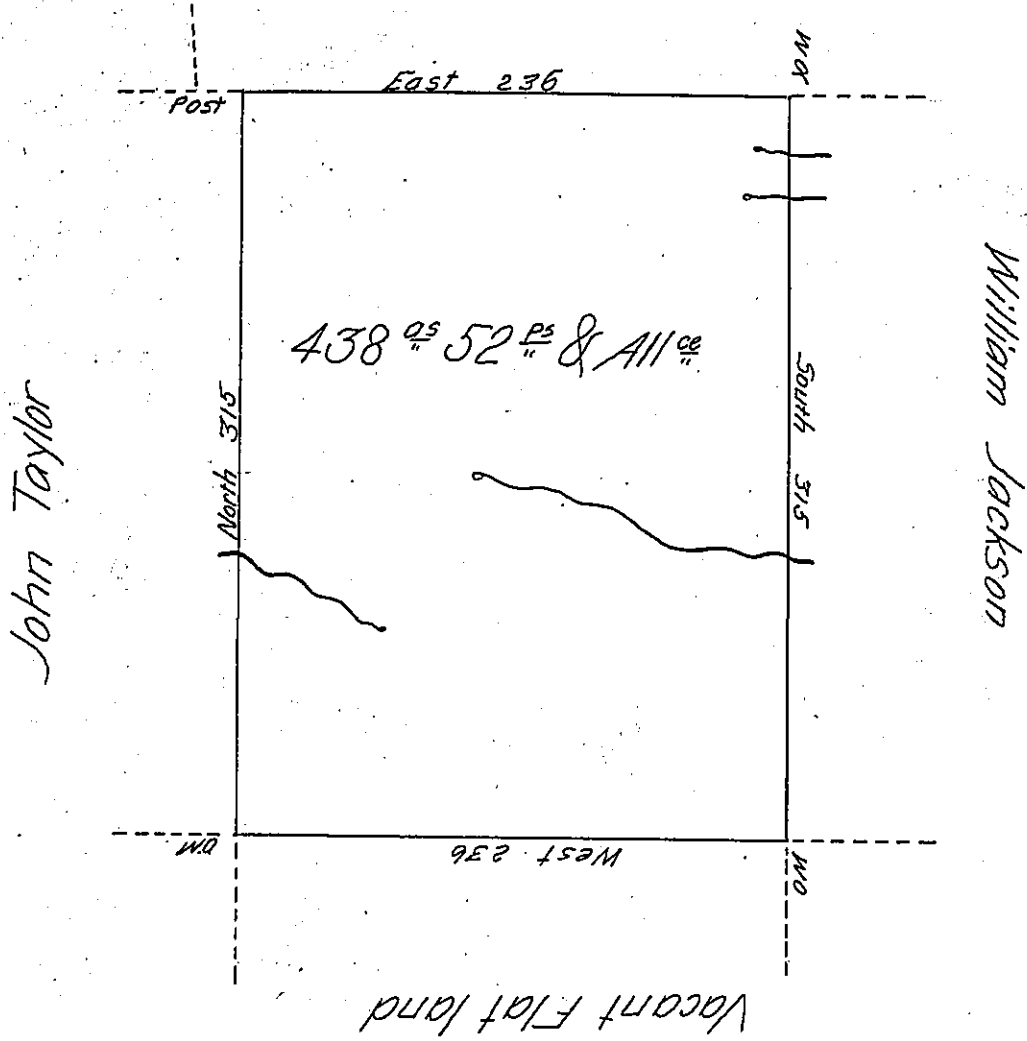


John Bryson



Situate on the head South branches of Spruce Run about a mile South of the Chicleclamoos path about two Miles South of the path in Stewarts Valley in the County of Huntingdon Surveyed the tenth day of October 1792 to John Hall in pursuance of his warrant dated the 27th day of July 1792 Containing Four hundred & thirty eight acres & fifty two perches & the Allee of Six P Cent &c for Roads &c.

To Daniel Brodhead Esq

John Canan D.S.

Surv. Genl of Pennsylv^a

IN TESTIMONY that the above is a copy of the original remaining on file in the Department of Internal Affairs of Pennsylvania, made conformably to an Act of Assembly approved the 16th day of February, 1833, I have hereunto set my Hand and caused the Seal of said Department to be affixed at Harrisburg, this fourth day of April 1905

George R. Perry
Secretary of Internal Affairs.